



# KCP-East District Cancer Council Forum

February 9, 2021

[www.kcp.uky.edu](http://www.kcp.uky.edu)

# Welcome Community Partners!

- Objectives
  - Understand the collaboration process between DCCs and KCP.
  - Let's start a fire: funding for DCCs to implement community cancer control activities
  - Community Engagement: partnerships, feedback, and action
- What brings us all to the table today? *Breakout Session*
- What is a District Cancer Council?
- Data: What the numbers tell us about our story
- Individual DCC meetings *Breakout Session*
  - Successes/adaptations/bright spots during the Pandemic
  - Challenges/needs/gaps for cancer control
  - Role of the DCCs

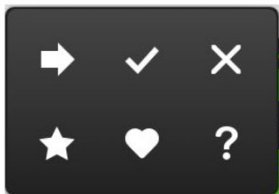
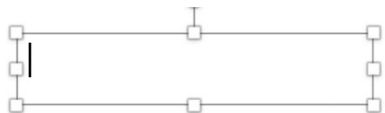
You are viewing Heather Wilson's screen

View Options ▾

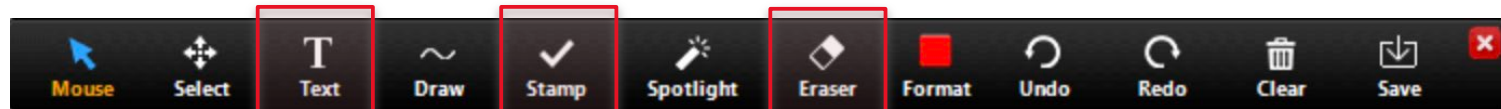
At top of screen when host is sharing screen

Adding text and stamps to a shared screen

- ✓ Fit to Window
- 50%
- 100% (Original Size)
- 150%
- 200%
- 300%
- Exit Full Screen
- Annotate
- Hide Video Panel
- Side-by-side Mode
- Stop Participant's Sharing



Annotate tool bar will appear

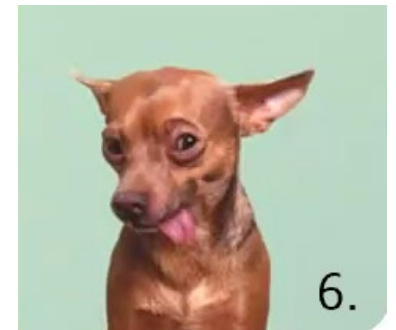
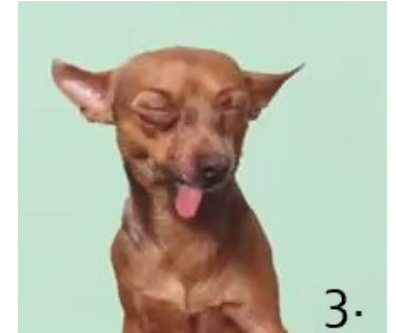


To type on screen

To insert a stamp

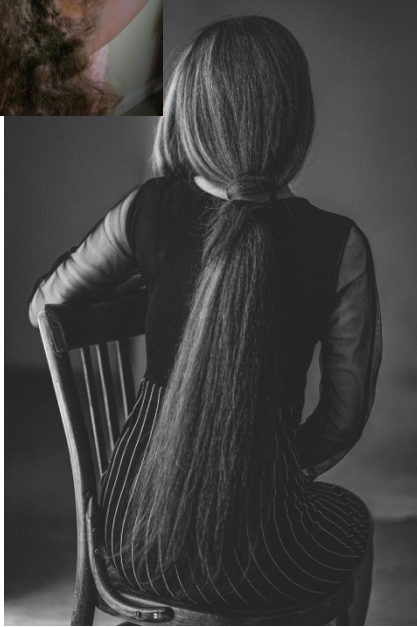
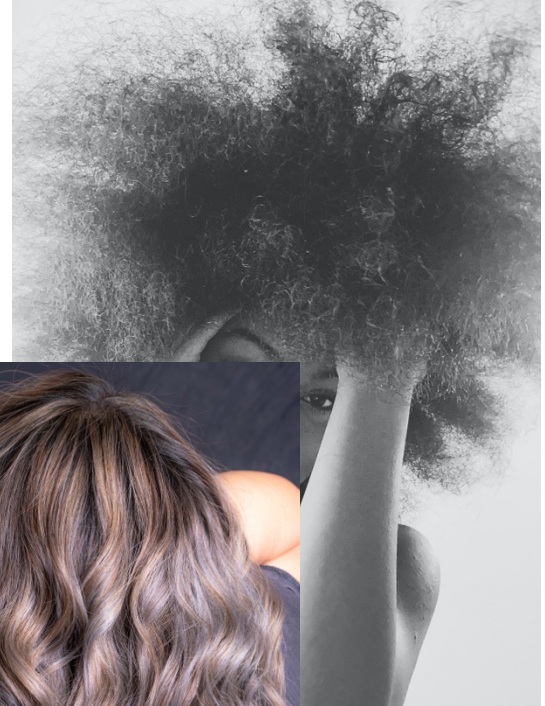
Be careful to only erase your own items

# On the Chihuahua scale, how are you feeling today?



# What's Your Why?

My simple why.



# What is your “why”?



Dress In Blue Day



**James Graham  
Brown Cancer Center**



# Regional Cancer Control Specialists

**Mary Schneider**  
Northern Kentucky  
(859) 240-9557  
mary.schneider@uky.edu

**Amy Steinkuhl**  
Bluegrass West  
(859) 608-9021  
amy@uky.edu

**Tonya Pauley**  
Bluegrass East  
(859) 200-6689  
tonya\_pauley@uky.edu

**Angela Combs**  
Buffalo Trace & Gateway  
(606) 584-7222  
admitch@uky.edu

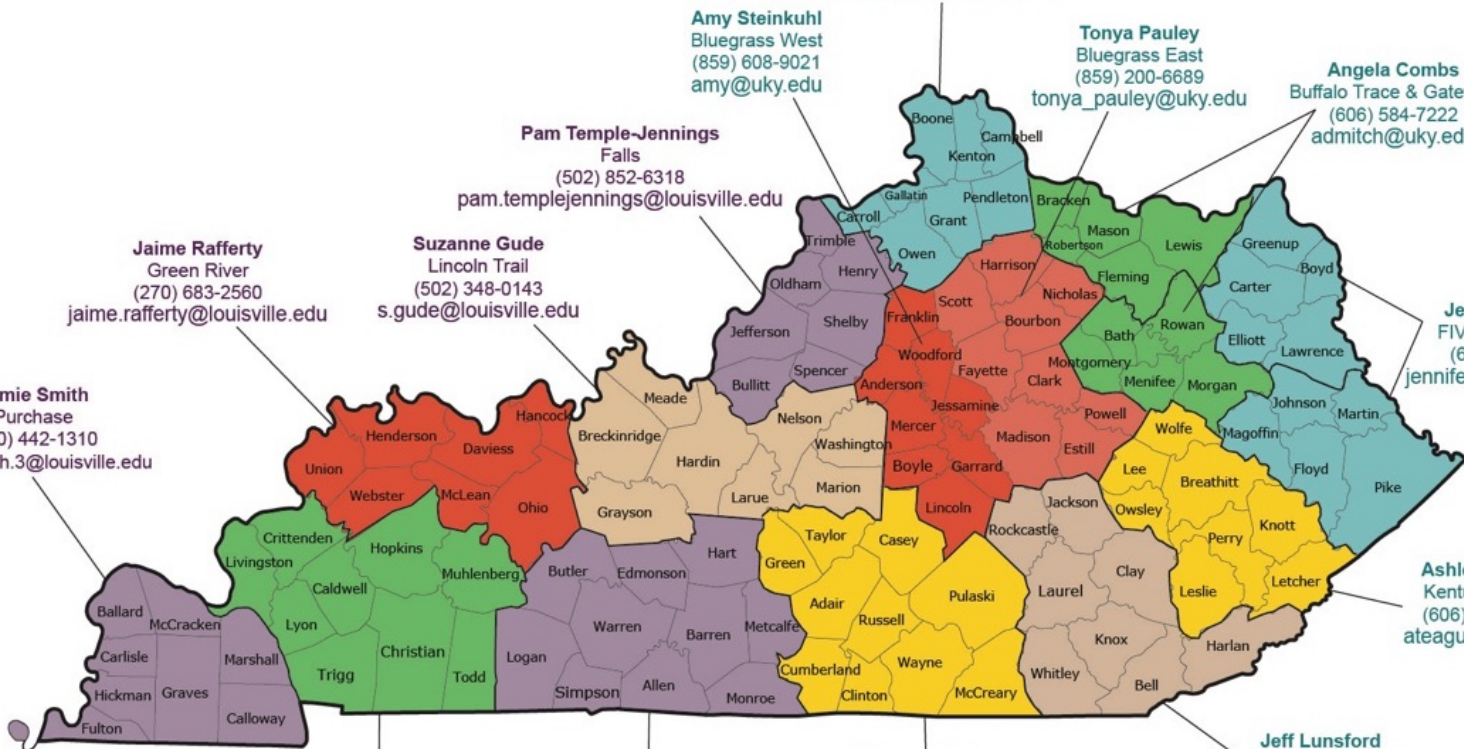
**Pam Temple-Jennings**  
Falls  
(502) 852-6318  
pam.templejennings@louisville.edu

**Jaime Rafferty**  
Green River  
(270) 683-2560  
jaime.rafferty@louisville.edu

**Suzanne Gude**  
Lincoln Trail  
(502) 348-0143  
s.gude@louisville.edu

**Jennifer Wilson**  
FIVCO, Big Sandy  
(606) 434-9531  
jenniferwilson@uky.edu

**Jamie Smith**  
Purchase  
(270) 442-1310  
jamie.smith.3@louisville.edu



**Elizabeth Westbrook**  
Pennyrile  
(270) 745-2044  
e.westbrook@louisville.edu

**Elizabeth Westbrook**  
Barren River  
(270) 745-2044  
e.westbrook@louisville.edu

**Wynona Padgett**  
Lake Cumberland  
(606) 383-0367  
wynona.padgett@uky.edu

**Jeff Lunsford**  
Cumberland Valley  
(606) 309-9111  
jeff.lunsford@uky.edu

**Ashley Teague**  
Kentucky River  
(606) 233-1627  
ateague@uky.edu



Since 1982

Statewide cancer prevention and control program

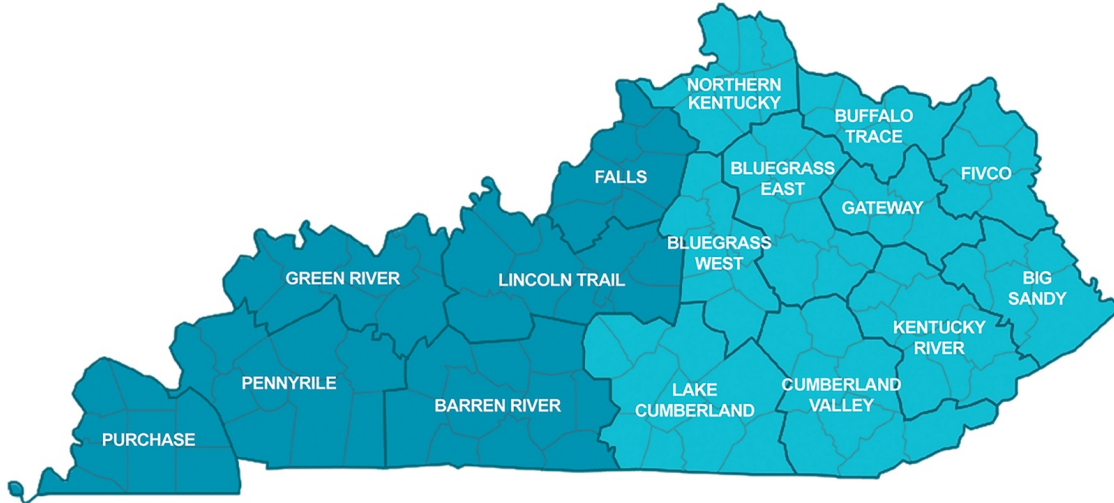
Regional staff serve all 120 Kentucky counties

District Cancer Councils (DCCs) as regional advisory groups

Deliver evidence-based cancer prevention, early detection, and survivorship programs with partners

# District Cancer Councils

- A District Cancer Council (DCC) exists in each district. DCC's work with Kentucky Cancer Program (KCP) regional cancer control specialists to identify and address local cancer problems. DCC members are survivors, physicians, health care professionals, social workers, clergy, health educators, representatives of local groups, government agencies and other community volunteers.



# District Cancer Councils

- KCP works with District Cancer Councils (DCCs) serve as advisory groups to facilitate community implementation of strategies and activities identified in the Kentucky Cancer Action Plan, AND strategies and activities identified by DCC members and community stakeholders aimed to impact cancer burdens at the community level
- Working together, DCCs can assess and aggregate community resources, identify assets and also the needs at district levels. DCC's through frequent communication encourage coordination of activities and involvement of multiple community organizations, health providers, civic leaders, local government, educators, and the public.
- DCCs and their associations with KCP and communities provide channels of feedback from communities to state and institutional resources and from state and institutional resources to communities.



Home

Cancer Screening  
Tests / Tobacco  
Use

Information,  
Referral, and  
Navigation

Patient Assistance

Medical Care

Survivorship and  
Support Groups

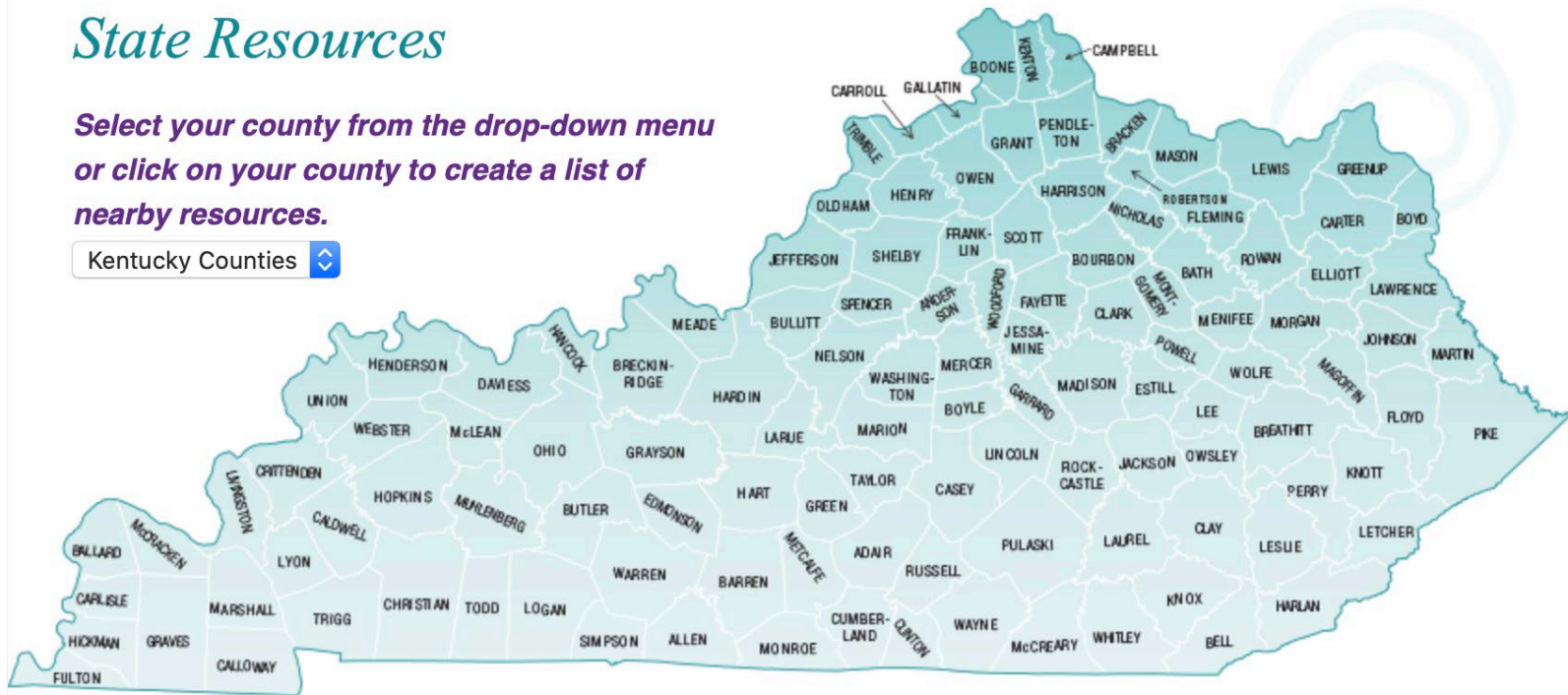
National and State  
Resources

About Us

## State Resources

**Select your county from the drop-down menu  
or click on your county to create a list of  
nearby resources.**

Kentucky Counties 



[www.kycancerprogram.org](http://www.kycancerprogram.org)



**Pamela Hull, PhD**  
Associate Director of  
Population Science &  
Community Impact



**Lovoria Williams, PhD,**  
**FNP-BC, FAANP, FAAN**  
Assistant Director of  
Cancer Health Equity

# My "Why"



**GOAL: Reduce cancer burden for all Kentuckians**



Education &  
Screening



Research &  
Communications

**GOAL: Reduce cancer burden for all Kentuckians**



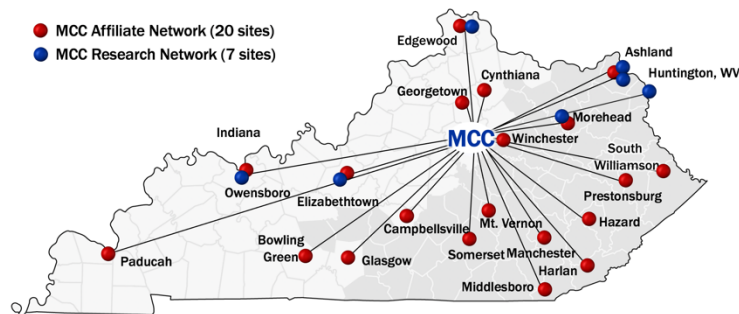
Education &  
Screening



Research &  
Communications



**Close connections with:**



Markey Affiliate and Research  
Networks





Since 2002

Kentucky's state cancer coalition of 70+ organizations

Develops and implements the state Cancer Action Plan

Implements statewide initiatives with policy and system focus

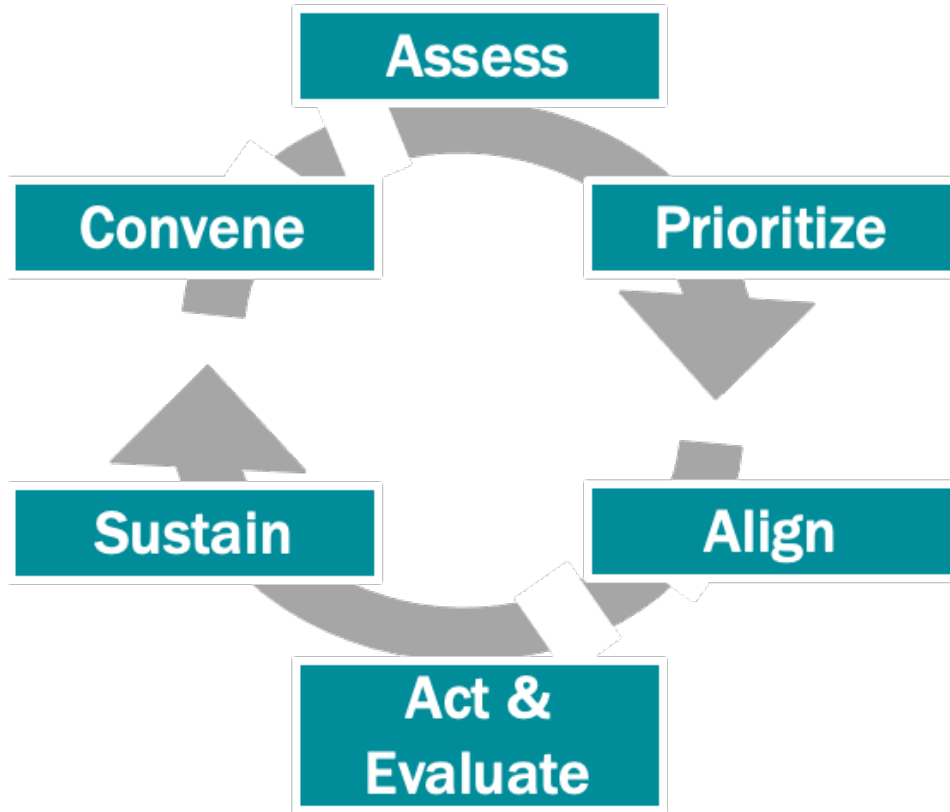
Partners with KCP to implement plan at regional and local level

<https://www.kycancerc.org>

**Kentucky Cancer Consortium**  
A partnership for life.  
[www.KyCancerC.org](http://www.KyCancerC.org)

*Kentucky Cancer Consortium*  
**CANCER ACTION PLAN**  
a blueprint for cancer prevention  
and control in our state by 2022

# Community Partnership Process



## Current KY Cancer Action Plan

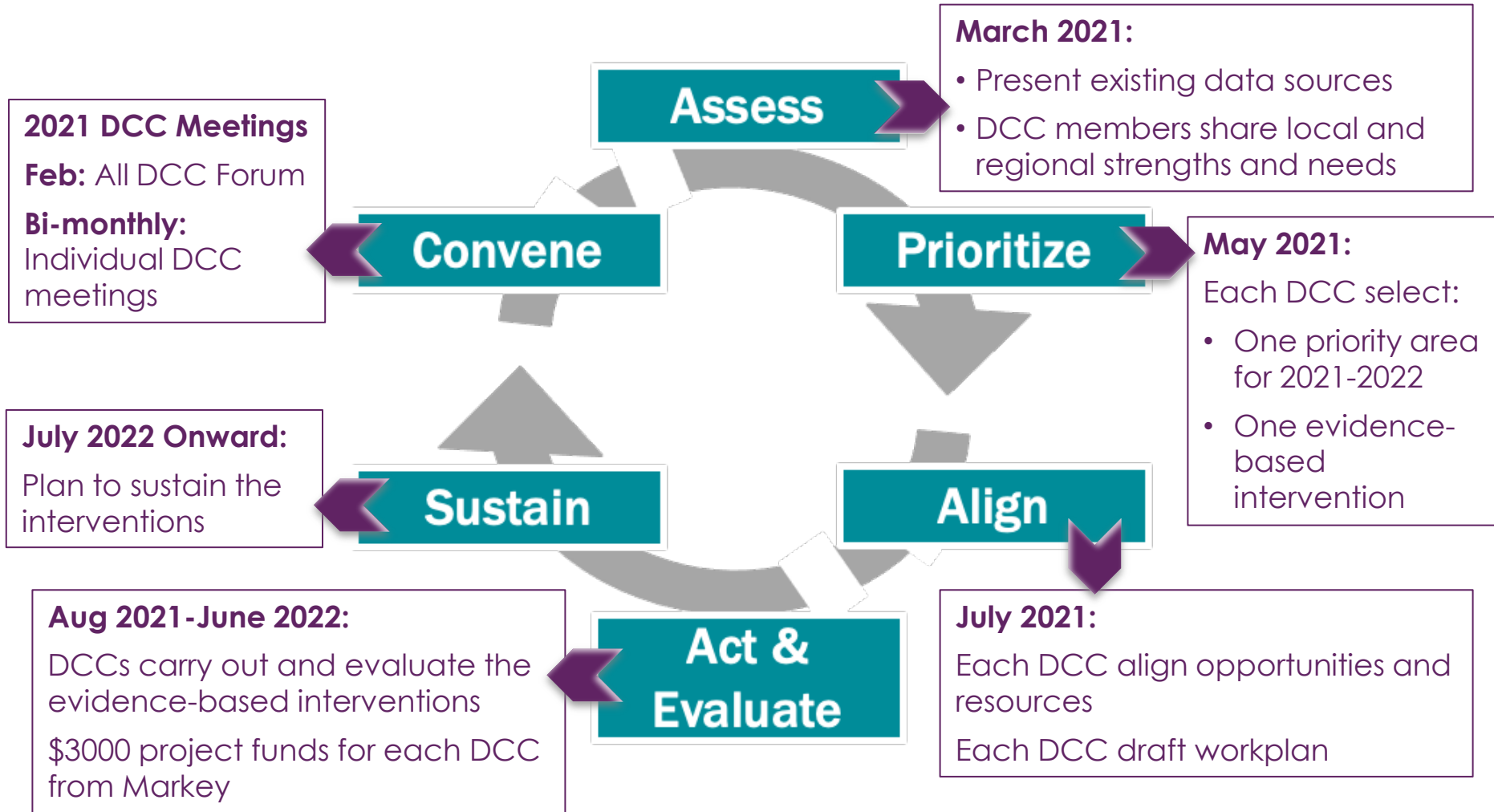
Implement evidence-based interventions in three priority areas by 2022:

1. Tobacco Treatment
2. Colorectal Cancer Screening
3. Cancer Survivorship

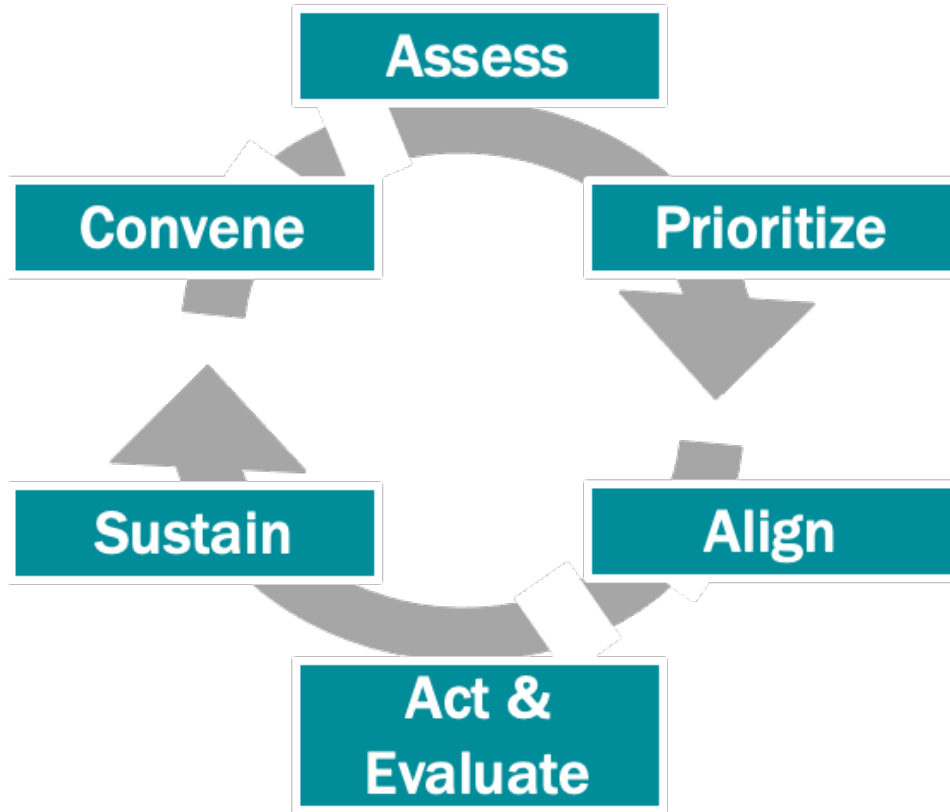
**Statewide:** KCC

**Local/Regional:** KCP & DCCs

# Community Partnership Process: KCP-East



# Community Partnership Process: Overall 2021



## Developing Next KY Cancer Action Plan for 2022-2026

1. Reassess needs through data and community perspectives
2. Identify local/regional and statewide priorities
3. Align priorities, opportunities and gaps to create action plan

### Stakeholder Input

- Statewide: KCC
- Local/Regional: KCP & DCCs

# What did you do on Super Bowl Sunday?

1. I rooted for Tampa Bay Buccaneers

2. I rooted for Kansas City Chiefs

3. I only watched the commercials

4. I only watched the half time show

5. I only watch basketball

6. Huh? What Super Bowl?

# **Kentucky Cancer Registry Data Presentation**

**Dr. Jaclyn McDowell**

# What other data would you like to see to help guide the work in your district?

(Use “Annotation” to type on screen, or type in chat box)